

FLAT WALKABLE COVERING

CONCRETE AND MASONRY SUPPORT: thermal insulation - prefabricated slab flooring

Para. 1

Masonry and cement support and sloping screed of sand and cement mortar drawn to a straight edge and, if necessary, smoothed using a trowel. Before laying the membrane, treat the entire surface of the screed that is to be made waterproof, as well as the overlaps, with **PRIMER V 70**, applying this at a rate of 200 ÷ 300 g/m², and in any case using a sufficient quantity to ensure adherence of the waterproof membrane.

Para. 2

4 mm thick NB polymer modified bitumen underlayer membrane, (reinforced with spunbound polyester non-woven fabric), installed with full adherence or when the support specifications make it more suitable, in semi-independence subject to a perforated layer of **POLYFOR**, torched on and carefully welded on the overlaps (minimum overlaying: 80 mm side and 150 mm butt - actual minimum adhesion: 60 mm side and 100 mm butt - for butt joints, a maximum overlapping of three canvases will be allowed) and in correspondence with all the perimeter details.

Para. 3

Supply and installation, for heat or hot air canvas, in correspondence with the vertical laps, of a 25 cm high strip of 4 mm thick NB bitumen membrane (see para. 2).

Para. 4

4 mm thick NB polymer modified bitumen cap sheet membrane, (reinforced with spunbound polyester non-woven fabric) torched on, in sufficient quantity and in the same direction as the basic membrane but with staggered longitudinal joints (that is, laying the canvases of the 2nd layer straddling the 1st one), completely adhering and carefully welded on the overlaps (minimum overlapping: 80 mm side and 150 mm butt - minimum actual adhesion: 60 mm side and 100 mm butt - for butt joints, a maximum overlapping of three canvases will be allowed) and in correspondence with all the perimeter details.

Para. 5

Doubling corner element with membrane with specifications as described above to waterproof the vertical that will overlap the horizontal one by at least 10 cm, and welded for thermal-tempering with specific safety or hot air burner.

The height of the vertical one will be equal or greater than 15 cm from the height of the finished flooring.

Para. 6

DRENO 200 separation and filtering layer (polyester non-woven fabric of 200 g/m² in rolls) carefully stretched across the finishing membrane (minimum overlaying between the rolls): 100m side and butt) and in correspondence with all the perimetral details.

Para. 7

Closed cell XPS insulating panel with shutter edges, resistant to compression and to maximum deformation, thickness in cm available depending on the geometric conditions and trend of local gradients, with one of the following frameworks: staggered longitudinal joints, staggered transversal joints, angular joints and with joints which are, in any case, properly placed alongside each other and well levelled.

Para. 8

Supply and installation of separation layer in LDPE polyethylene film, that is 20/100 mm thick, dry applied with overlaying laps of 15 cm. The layer will lap for a height greater than the thickness of the finished flooring.

Para. 9

Compressible element of perimeter protection.

Para. 10

Board supports, support diameter: 15,5 cm, installed on 20 x 20 cm of bituminous membrane cut-outs with the role of separating and preventing punctures in the waterproofing as well as compensating modest differences in height, spacing distance between supports: from 3 to 7 mm.

Para. 11

Prefabricated, freeze-proof cement support flooring for external use, cm x, thickness cm, finishing: colour

Para. 12

Protection flashing of the peak of the membrane with mm thickness, length cm, fixed using 1 every cm.

Para. 13

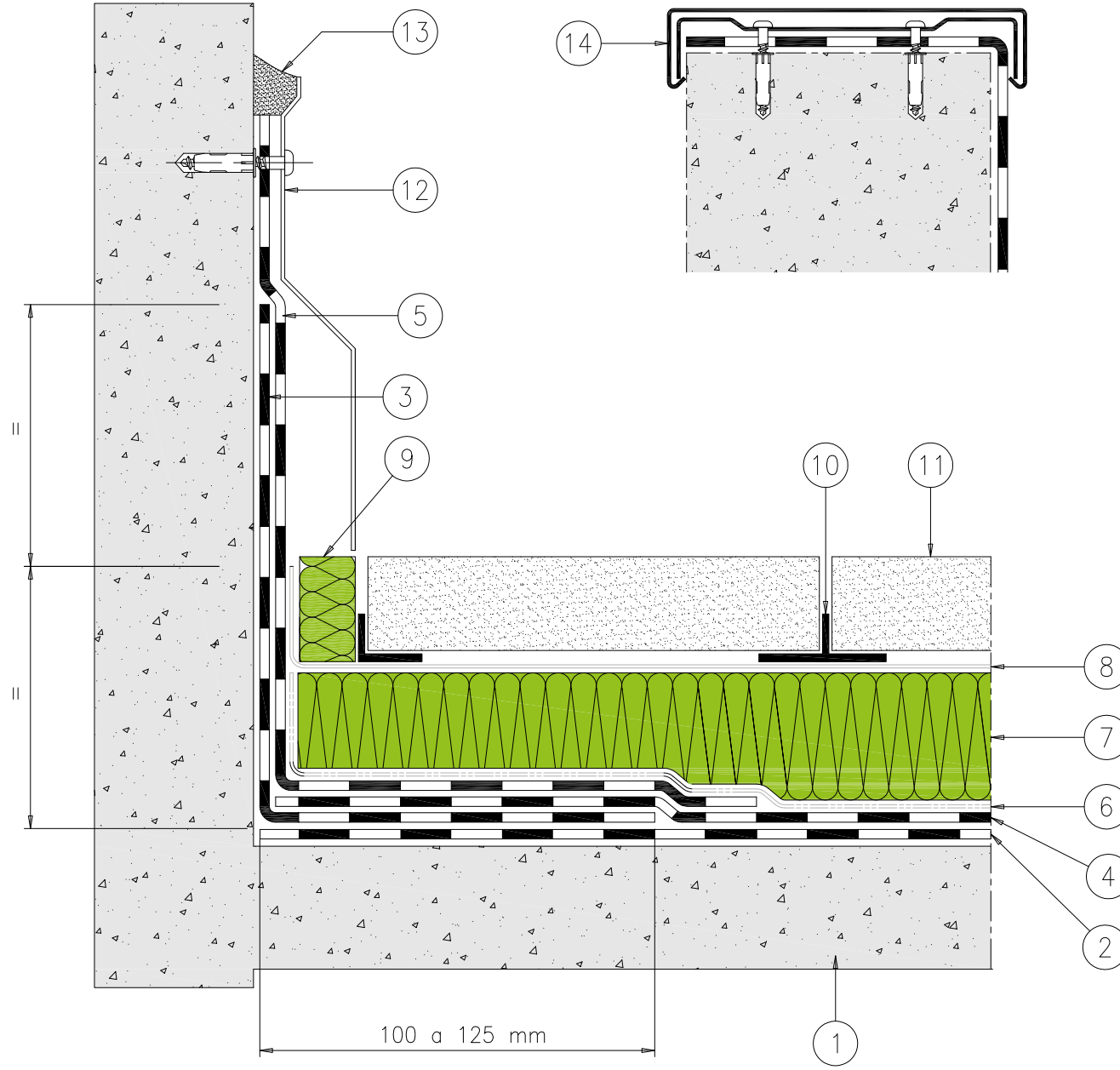
Upper sealing with bituminous mastic.

Para. 14

Alternatively flashing or wall coping cover with a thickness of mm, length cm, dripstone on both sides, sloping towards the cover, fixed with

FLAT WALKABLE COVERING

CONCRETE AND MASONRY SUPPORT: thermal insulation - prefabricated slab flooring



1. Support treated with Primer V70
 2. NB polymer modified bitumen underlayer membrane
 3. NB bitumen membrane corner strengthening strip
 4. NB polymer modified bitumen cap sheet membrane
 5. Doubling corner made with NB bitumen membrane cap sheet
 6. Polyester "TNT" filtering geotextile
 7. Heat insulating element in XPS
 8. "LPDE" polyethylene film
 9. Compressible element of perimeter protection
 10. Polyethylene supports
 11. Flooring slabs
 12. Metallic flashing
 13. Sealing
- Alternatively:**
14. Wall coping cover