

NON WALKABLE FLAT COVERING

CORRUGATED METAL SHEET SUPPORT

Para. 1

Slanting support plate in supporting corrugated metal sheet, medium gradient %, max inter axle spacing rests ml. max useful overload kg/m².

Para. 2

Perimeter support beam.

Para. 3

Insulating system **NORDGRECA EPS** obtained by continuous coupling of a specific bituminous elastoplastomer polymer membrane with installed self-extinguishing sintered XPS that are pre-shaped on the lower part on the dimensions of the corrugated metal sheet support for overlaying, starting from the lowest point of the layer, following the Quincunx layout and with the joints levelled and properly placed alongside each other.

The bituminous-polymer-elastoplastomeric membrane (BPP), applied to the smooth type pre-shaped panels can be produced with reinforced polyester non-woven fabric or strengthened surfacing mat.

The insulating system will be fixed mechanically using screws with washers (self-threading and drilling for light sheet metals). The screw is long enough to allow the screw itself to stick out by at least 3 mm from the sheet metal (the use of screws that are shorter or at least the same as the maximum thickness of the **NORDGRECA EPS** system prevents the screws anchoring to the lower fretwork and subsequently sticking through the lower side of the corrugated metal sheet. Washer diameter is 75 mm, screw butt position in the lowered washer to prevent stampings on the waterproof membrane following the concentrated compression or diffusion of the insulating panel; fixed density:

- central zones fittings/m²
- perimeter zones fittings/m²
- corner zones fittings/m²

Para. 4

Thermal-insulating element of perimeter protection.

Para. 5

Metallic perimeter angular profile, thickness of 1 mm, dimensions 200x200 mm, mechanically fixed, to act as wall dilation join.

Para. 6

4 mm thick NB polymer modified bitumen underlayer membrane, (reinforced with spunbound polyester non-woven fabric, reinforced composite), torched on in complete adherence and carefully welded to the overlap (minimum overlapping: 80 mm side and 150 mm butt - actual minimum adhesion: 60 mm side and 100 mm butt - for butt joints, a maximum overlapping of three canvases will be allowed) and in correspondence with all the perimeter details.

Para. 7

Angular profile created with perforated bituminous membrane **CANT BIT**, dimensions in mm. 45x35, applied for thermal-tempering in correspondence with the vertical laps.

Para. 8

NB polymer modified bitumen mineral cap sheet membrane, (reinforced with spunbound polyester non-woven fabric, reinforced composite, self-protecting reinforcement with chips of natural slate, installed in sufficient quantity and in the same direction as the basic membrane but with staggered longitudinal joints (that is, laying the canvases of the 2nd layer straddling the 1st one), completely adhering and carefully welded on the overlaps (minimum overlapping: 80 mm side and 150 mm butt - minimum actual adhesion: 60 mm side and 100 mm butt - for butt joints, a maximum overlapping of three canvases will be allowed) and in correspondence with all the perimeter details

Para. 9

Doubling corner element with membrane, with specifications as described above, to waterproof the vertical one that will overlap the horizontal one by at least 10 cm, and welded for thermal-tempering with specific safety or hot air burner.

The height of the vertical one will be equal or greater than 15 cm from the height of the finished flooring.

Para. 10

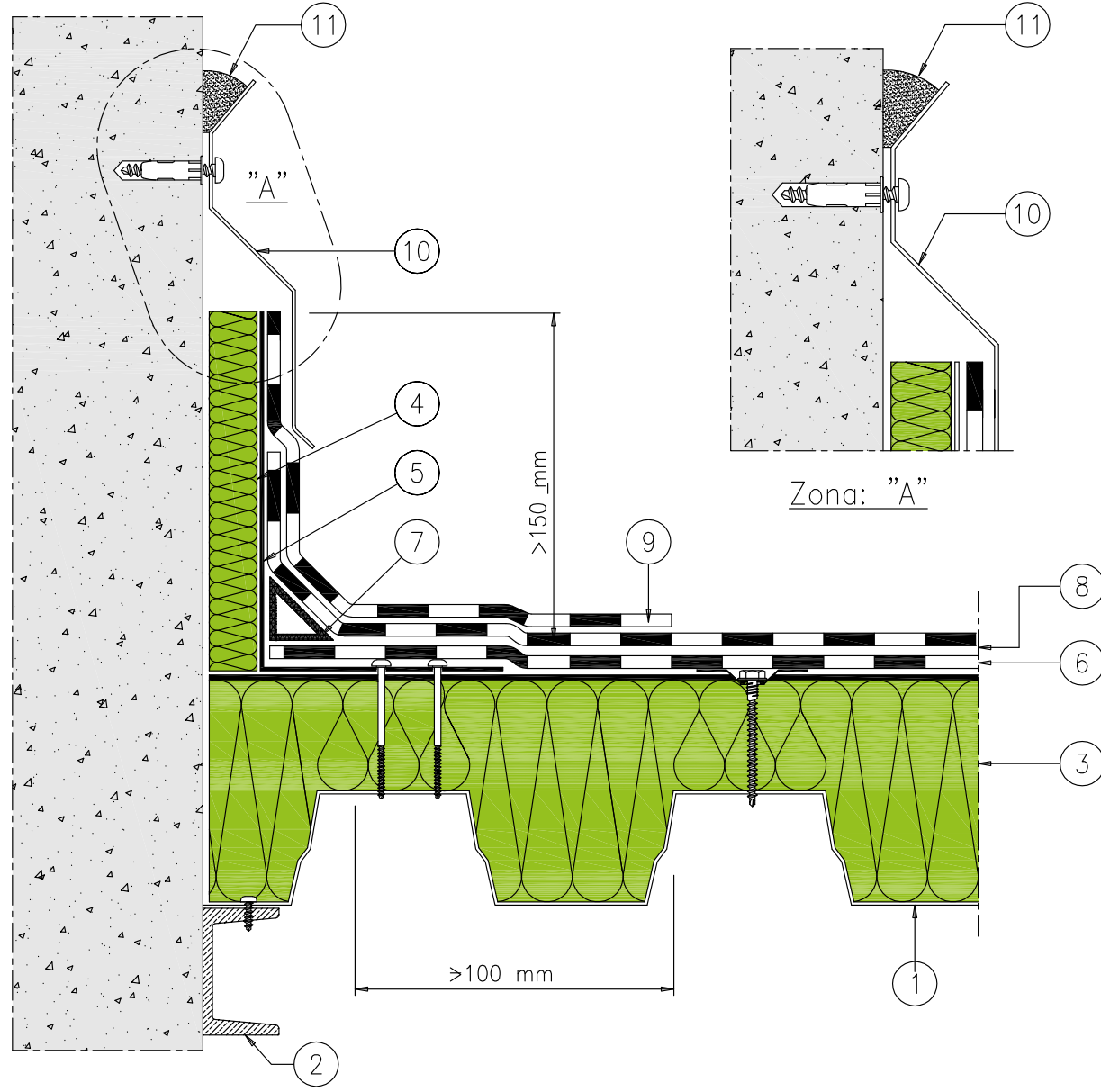
Protection flashing of the membrane peak with thickness mm, length cm, using 1 every cm.

Para. 11

Upper sealing with bituminous mastic.

NON WALKABLE FLAT COVERING

CORRUGATED METAL SHEET SUPPORT



1. Corrugated metal sheet supports
2. Perimeter support
3. Nordgreca thermal-insulating element
4. Perimeter protection element
5. Metallic profile
6. NB polymer modified bitumen underlayer membrane
7. "CANT BIT" angle fillet
8. NB polymer modified bitumen cap sheet membrane
9. Doubling corner made with NB bitumen membrane cap sheet
10. Metallic joint function flashing with mechanical fixing
11. Sealing