

FLAT WALKABLE COVER

CONCRETE AND MASONRY SUPPORT: thermal insulation – traditional tile flooring

Para. 1

Masonry and cement support and sloping screed of sand and cement mortar drawn to a straight edge and, if necessary, smoothed using a trowel. Before laying the membrane, treat the entire surface of the screed that comprises waterproof, as well as the overlaps, with **PRIMER V 70**, applying this at a rate of 200 + 300 g/m², and in any case using a sufficient quantity to ensure adherence of the waterproof membrane.

Para. 2

Joint strip to be applied along the whole perimeter and close to all the relief parts: **FLEXPOL** 4 mm thick elastomeric polymer bituminous membrane reinforced with polyester non-woven fabric, torched on in adhesion with the horizontal levels (for at least 15 cm) and vertical ones (for at least 20 cm). It will be no more than 1m wide.

Para. 3

Sealing Element (EN 13707): 5 mm thick polyalphaolefin (PAO) polymer bituminous membrane ITER 20 measured on the selvage, reinforced with support made up of high performance polyester non-woven fabric, torched on in complete adherence with suitable abundance on the overlaps (minimum overlapping: 100 mm side, 150 mm transversal; actual minimum adhesion: 80 mm side, 100 mm transversal) and to the point of all the perimeter details, emerging or recessed units and any other important point.

The membrane laid on the horizontal level will seal the extremity on the level of the joint strip.

Para. 4

Doubling corner element with membrane, with specifications as described above, to waterproof the vertical one that will overlap the horizontal one by at least 10 cm, and welded for thermal-tempering with specific safety or hot air burner.

The height of the vertical one will be equal or greater than 15 cm from the height of the finished flooring.

Para. 5

Supply and installation of filtering separation layer comprises rot-proof polyester synthetic non-woven fabric, staple punched with a weight of approximately 300 g/m² and applied dry with the overlaps overlaying in a simple fashion for 15 cm.

Para. 6

Closed cell XPS insulating panel, with shutter edges, resistant to compression, and to maximum deformation of the , thickness in cm provided, depending on the geometric conditions and trend of local gradients, with one of the following frameworks: staggered transversal joints, angular joints and with joints which are, in any case, properly placed alongside each other and well levelled.

Para. 7

Protection element with perimeter lap with a compressible XPS element that is 2 cm thick. Fixed with suitable glue.

Para. 8

Filtering separation layer made up of rot-proof polyester synthetic non-woven fabric, staple punched with a weight of approximately 300 g/m² and applied dry with the overlaps overlaying simply for 15 cm.

Separation layer in LDPE polyethylene film, that is 20/100 mm thick, dry applied with overlying laps of 15 cm. The layer will lap for a height greater than the thickness of the finished flooring.

Para. 9

Sand and cement screed (if necessary with added non-shrink or rubber latex) with an average thickness of 4 cm, reinforced with galvanised steel frame; dilation joints via interposition of a suitable synthetic profile or post-hardening milling.

Para. 10

Freeze proof tiled flooring for external use cm x cm, minimum thickness in mm, laid with mortar or specific glue: width of the spacing between the tiles mm, plastering and grouting of joints between tiles with special cement mortar for type of spacing, colour: dilation joint, 1 every m² min max.

Para. 11

Protection flashing of the membrane peak mm thick, length cm, fixed using 1 every cm

Para. 12

Upper sealing with bituminous mastic.

Para. 14

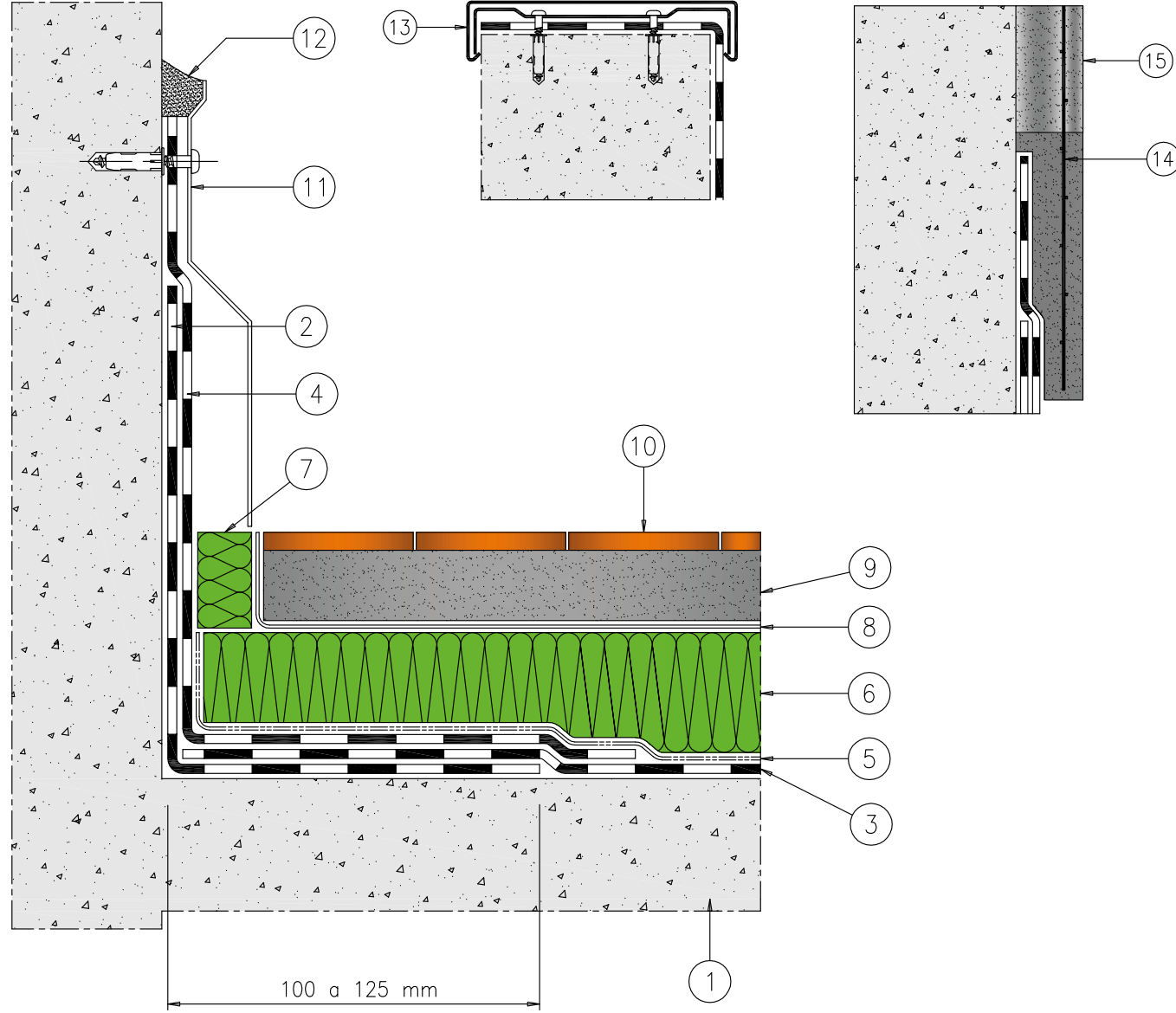
Alternatively, flashing or wall coping cover with a thickness of mm, length cm, dripstone on either side, gradient towards the cover, fixed using

Para. 15-16

Alternatively, plaster bearing net and plaster finish with membrane lap protection.

FLAT WALKABLE COVER

CONCRETE AND MASONRY SUPPORT: thermal insulation – traditional tile flooring



1. Support treated with Primer V70
2. 4mm FLEXPOL corner strengthening strip
3. ITER 20 MM 5 sealing element
4. Doubling corner made with 5 mm ITERL 20 membrane
5. Polyester "non-woven fabric" filtering geotextile
6. Heat insulating element in XPS
7. Compressible element of perimeter protection
8. Separation and protection layer
9. Screed coat
10. Glued flooring
11. Metallic flashing with mechanic fitting
12. Sealing

Alternatively:

13. Wall coping cover

Alternatively:

14. Plaster bearing frame
15. Plaster