

NON-INSULATED WALKABLE COVERING

CONCRETE AND MASONRY SUPPORT: thermal insulation – traditional tile flooring

Para. 1

Masonry and cement support and sloping screed of sand and cement mortar drawn to a straight edge and, if necessary, smoothed using a trowel. Before laying the membrane, treat the entire surface of the screed that comprises waterproof, as well as the overlaps, with **PRIMER V 70**, applying this at a rate of $200 \div 300 \text{ g/m}^2$, and in any case using a sufficient quantity to ensure adherence of the waterproof membrane.

Para. 2

Joint strip to be applied along the whole perimeter and close to all the relief parts: **FLEXPOL** 4 mm thick elastomeric polymer bituminous membrane reinforced with polyester non-woven fabric, torched on in adhesion with the horizontal levels (for at least 15 cm) and vertical ones (for at least 20 cm). It will be no more than 1m wide.

Para. 3

Application of solvent based bituminous adhesive made up of modified bitumen with special adhesion additive resins. The adhesive must be poured directly onto the support and spread evenly using appropriate tools (e.g. rubber serrated scraper or similar). Starting from the lowest point of the cover going towards the top until there is enough prepared area to receive several rolls of waterproofing material.

The amount of adhesive varies according to the roughness of the support.

Para. 4

Sealing Element (EN 13707): 5 mm thick polyalphaolefin (PAO) polymer bituminous membrane SUPER A measured on the sel-vage, reinforced with support made up of high performance polyester non-woven fabric, torched on in complete adherence with suitable abundance on the overlaps (minimum overlapping: 100 mm side, 150 mm transversal; actual minimum adhesion: 80 mm side, 100 mm transversal) and to the point of all the perimeter details, emerging or recessed units and any other important point.

The membrane laid on the horizontal level will seal the extremity on the level of the joint strip.

Para. 5

Doubling corner element with membrane, with specifications as described above, to waterproof the vertical one that will overlap the horizontal one by at least 10 cm, and welded for thermal-tem-pering with specific safety or hot air burner. The height of the vertical one will be equal or greater than 15 cm from the height of the finished flooring.

Para. 6

Board supports, support diameter: 15,5 cm, installed on 20 x 20 cm of bituminous membrane cut-outs with the role of separat-ing and preventing punctures of the waterproofing as well as compensating modest differences in height, spacing distance between supports: from 3 to 7 mm.

Para. 7

Prefabricated, freeze-proof cement support flooring for external use cm x cm, thickness cm, finishing

Para. 8

Protection flashing of the membrane mm thick, length cm, fixed using 1 every cm every cm.

Para. 9

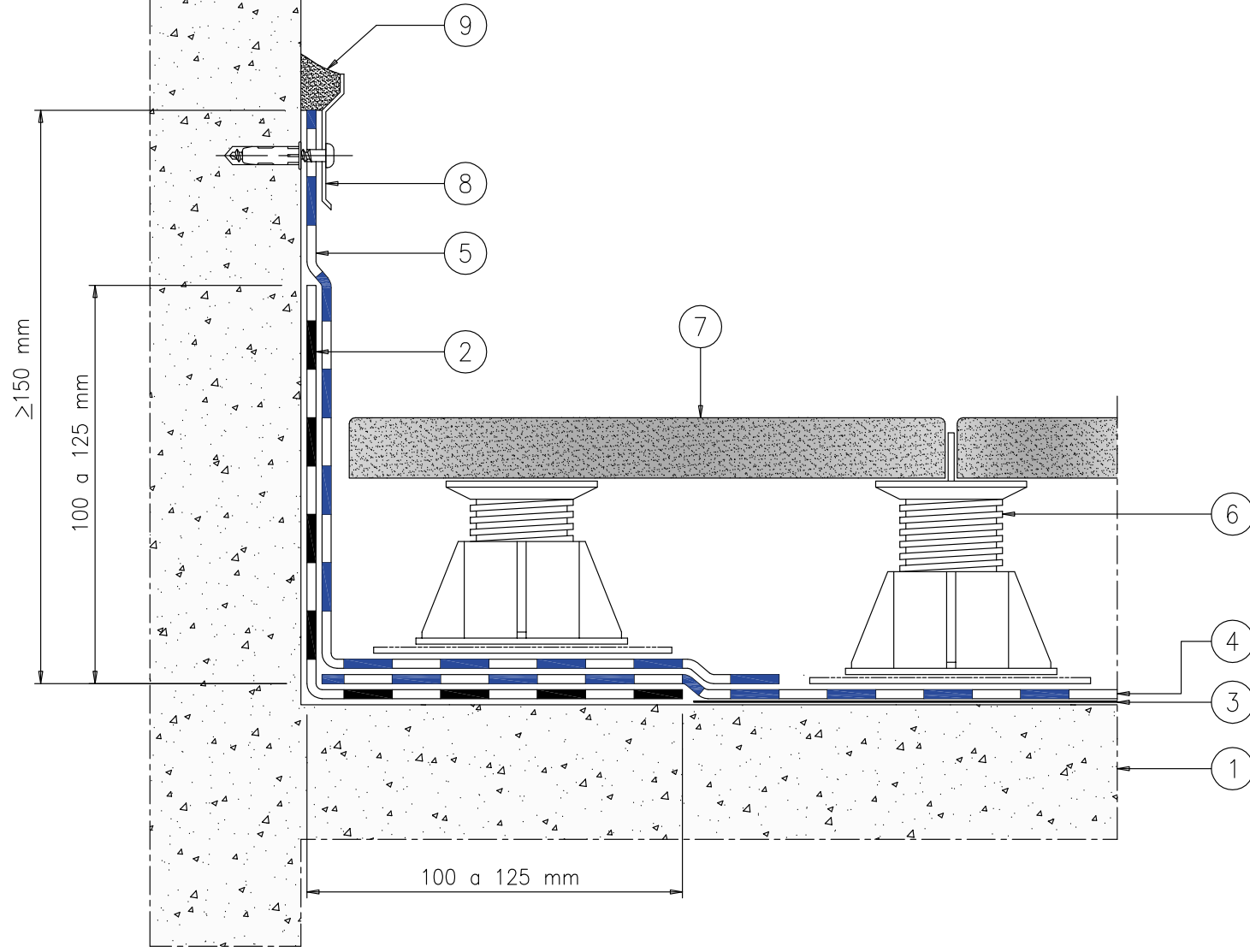
Upper sealing with bituminous mastic.

Para. 10

Alternatively, flashing or wall coping cover with a thickness of mm, length cm, dripstone on either side, gradi-ent towards the cover, fixed using

NON-INSULATED WALKABLE COVERING

CONCRETE AND MASONRY SUPPORT: thermal insulation – traditional tile flooring



1. Support treated with Primer V70
2. 4mm Flexpol corner strengthening strip
3. Asphalt adhesive
4. Super A 5 mm sealing element
5. Super A 5 mm doubling corner
6. Polyethylene adjustable supports
7. Cement flooring slabs
8. Metallic flashing
9. Sealing